



# N E X T L E V E L S Y S T E M S

PMT

N E X T  
L E V E L  
M O U N T I N G

PMT

Surpassing all expectations in the mounting of PV!  
For us, this means offering first-class service, unlimited safety  
and lasting quality.

Continuous development based on the requirements of our customers  
enables us to act directly on the needs of the market. With numerous  
national and international customers, we see our future in a global  
orientation and would like to continue to grow.

# WHO

# WE

# ARE

We are an innovative company dedicated to the development and construction of high quality PV mounting systems.

As a young and dynamic company, we pride ourselves on fostering a corporate culture characterized by openness, creativity and agility. Our goal is to challenge the status quo in the PV mounting industry and set new standards through technological innovations and unconventional approaches characterized by their stability, durability and optimized aerodynamics.

We strive to provide our customers not only with first-class products, but also with excellent customer service tailored to their individual needs.

## QUALITY

PMT stands for high quality assembly solutions (general technical approval), reliability & certified quality management.

## CUSTOMER FOCUS

With its origins in practice, the focus is on assembly-friendly click systems for fast and error-free assembly.

## INNOVATION

Our goal is to provide simple technical solutions at the highest engineering standards, with well thought-out accessories and continuous product testing for consistent product quality.

Reliable systems  
developed in the heart of  
the Franconian Forest.

# RESEARCH + DEVELOPMENT





# QUALITY + SAFETY

With a mounting system from PMT you decide for quality and safety that goes far beyond the usual market level.



# PMT MOUNTING SYSTEMS

## PITCHED ROOF

PMT FLAT DIRECT



PMT GHOST



## FLAT ROOF

PMT EVO 2.1 EW



PMT EVO 2.1 S

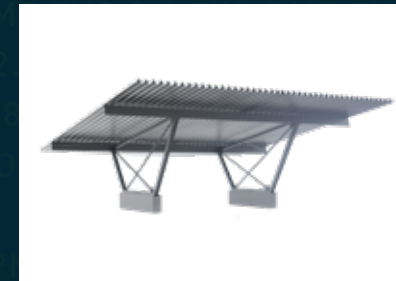


PMT X118



## CARPORT

PMT CARPORT





PMT

EVO 2.1

# PMT EVO 2.1

## PRODUCT BENEFITS

<b>Click Technology</b>	Click technology for simple and error-free assembly
<b>Ballast optimized</b>	Developed in the wind tunnel, thus maximally ballast optimized
<b>Adaptable</b>	All module sizes up to 1300 mm width mountable
<b>Lightning current</b>	Lightning current carrying capacity
<b>Accessories</b>	Route connection, mechanical fastening points, side cover, bracket for irradiation sensor, cable duct cover, edge clip, ridge connector (rails and module direction), center support
<b>Warranty</b>	15 years
<b>Universal module and ballast clamps</b>	30-50 mm
<b>Cable management</b>	Integrated cable routing in longitudinal and transverse direction directly on the system
<b>Product highlights</b>	Larger supporting surface = better load distribution Relief for the insulation due to better load distribution For less loadable insulation, saving of the third floor rail ProPlates of PE-HD Recyclate





# PMT EVO 2.1 EW

## TECHNICAL DATA

<b>Application type</b>	Flat roof up to 5° (special projects up to 10° possible)
<b>Inclination</b>	10° & 15°
<b>Orientation</b>	East-West
<b>Roof covering</b>	Foil (EPDM, PVC, TPO/FPO), bitumen, sheet metal, concrete ProPlate Gravel: Gravel + green roof
<b>Standard spacing</b>	From 2205 mm to 2882 mm (depending on module width and system variation)
<b>Weight</b>	System surface load incl. module and ballast from 9.5 kg/m <sup>2</sup>
<b>ProPlates</b>	Protective Plate of PE-HD Recyclate No plasticizer migration
<b>Certificates</b>	Lightning current carrying system according to DIN EN 62561-1 (VDE 0185-561-1):2017-12 General technical approval Z-14.4-790 for the complete system Low-resistance connection verification (<1 Ω) for the entire system
<b>Material</b>	Aluminium EN AW 6060 T66 PE-HD Recyclate
<b>Suitable PV modules</b>	All common PV module sizes: Width: 985 – 1300 mm Length: 550 – 2407 mm Height: 30 – 50 mm



# PMT EVO 2.1 S

## TECHNICAL DATA

<b>Application type</b>	Flat roof up to 5° (special projects up to 10° possible)
<b>Inclination</b>	10° & 15°
<b>Orientation</b>	South
<b>Roof covering</b>	Foil (EPDM, PVC, TPO/FPO), bitumen, sheet metal, concrete ProPlate Gravel: Gravel + green roof
<b>Standard spacing</b>	1500 mm / 1650 mm / 1800 mm
<b>Weight</b>	System surface load incl. module and ballast from 9.5 kg/m <sup>2</sup>
<b>ProPlates</b>	Protective Plate of PE-HD Recyclate No plasticizer migration
<b>Certificates</b>	Lightning current carrying system according to DIN EN 62561-1 (VDE 0185-561-1):2017-12 General technical approval Z-14.4-790 for the complete system Low-resistance connection verification (<1 Ω) for the entire system
<b>Material</b>	Aluminium EN AW 6060 T66 PE-HD Recyclate
<b>Suitable PV modules</b>	All common PV module sizes: Width: 985 – 1300 mm Length: 550 – 2400 mm Height: 30 – 50 mm





PMT

X118



# PMT X118

## PRODUCT BENEFITS

<b>1 system - 2 mounting types</b>	Edge clamping, quarter point clamping
<b>Installation time</b>	Fast assembly due to components with a high degree of preassembly
<b>Easy assembly</b>	User-friendly assembly with only one tool due to intuitive Push & Click technology
<b>Easy handling</b>	Particularly easy handling of large modules due to swivelling module mounting; Less assembly effort
<b>Easy maintenance</b>	Easy assembly and disassembly of the modules; System can be dismantled
<b>Safe mounting</b>	Mounting without leaning on the module / no micro-cracks
<b>EasyPlates</b>	Large contact surface with little material; EasyPlates are included in the guarantee; No plasticiser migration = protection of the roof membrane
<b>Low number of components</b>	Higher material availability with simplified logistics
<b>Roof load</b>	No point load, but flat load; Better load distribution due to large activation surface, approx. 400 cm <sup>2</sup> per EasyPlate
<b>Planning</b>	Optimised use of space due to simplified recessing of interfering objects on the roof
<b>Module fields</b>	Large module fields (30 x 30 m) possible
<b>Production</b>	Made in EU / Germany



# PMT X118

## TECHNICAL DATA

<b>Application type</b>	Flat roof up to 10°
<b>Roof inclination</b>	10°
<b>Orientation</b>	East-West
<b>Roof covering</b>	Foil (EPDM, PVC, TPO/FPO), bitumen, concrete
<b>Standard spacing</b>	2384 mm / 2504 mm / 2629 mm / 2749 mm
<b>Weight</b>	System surface load incl. module without ballast from 12.5 kg/m <sup>2</sup>
<b>EasyPlates</b>	Protective Plate of PE-HD + GF20 No plasticizer migration
<b>Material</b>	Sheet steel S350GD / S550GD, Coating ZM310 PE-HD + GF20
<b>PV module suitability</b>	All common PV module sizes <b>Edge clamping</b> Width = 990 - 1.230 mm Length = 1.600 - 2.000 mm Height = 30 - 40 mm  <b>Quarter point clamping</b> Width = 990 - 1.230 mm Length = 1.600 - 2.500 mm Height = 30 - 40 mm





PMT

FLAT

DIRECT



# PMT FLAT DIRECT

## PRODUCT BENEFITS

### Benefits

No roof penetration required

Parallel mounting on the roof

Usable up to 30°

Connection from 1° recommended, from 5° required

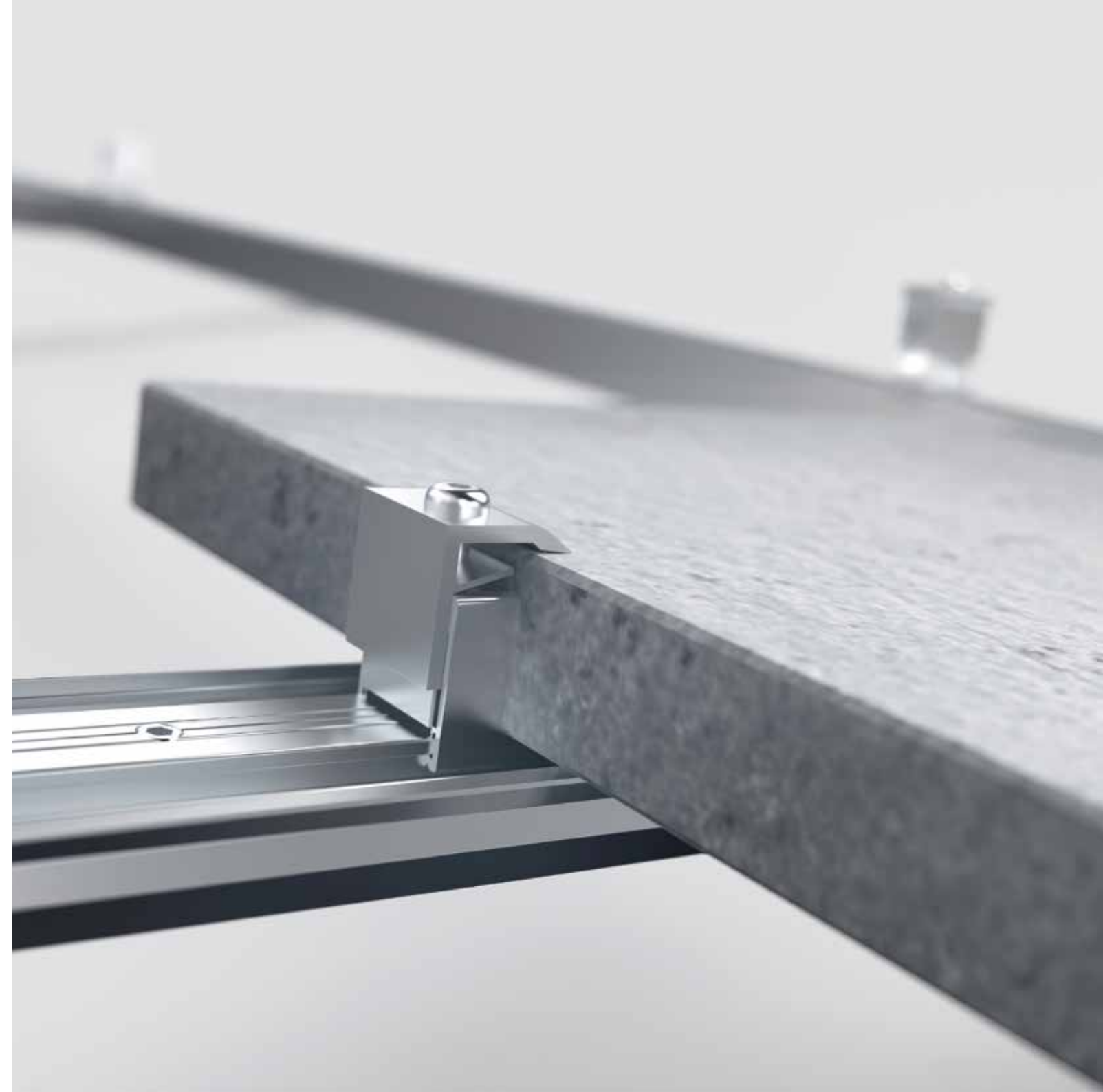
Can be mounted on many roof coverings  
Foil, bitumen, concrete, sandwich roofs up to a bead height of 70 mm

Works with various roof types:  
Saddle, shed, butterfly, barrel and vaulted roofs

Upright installation of the modules with a distance  
of 160 mm between the modules

Lowest ballast values due to aerodynamic effects  
Air gap of 160 mm between modules

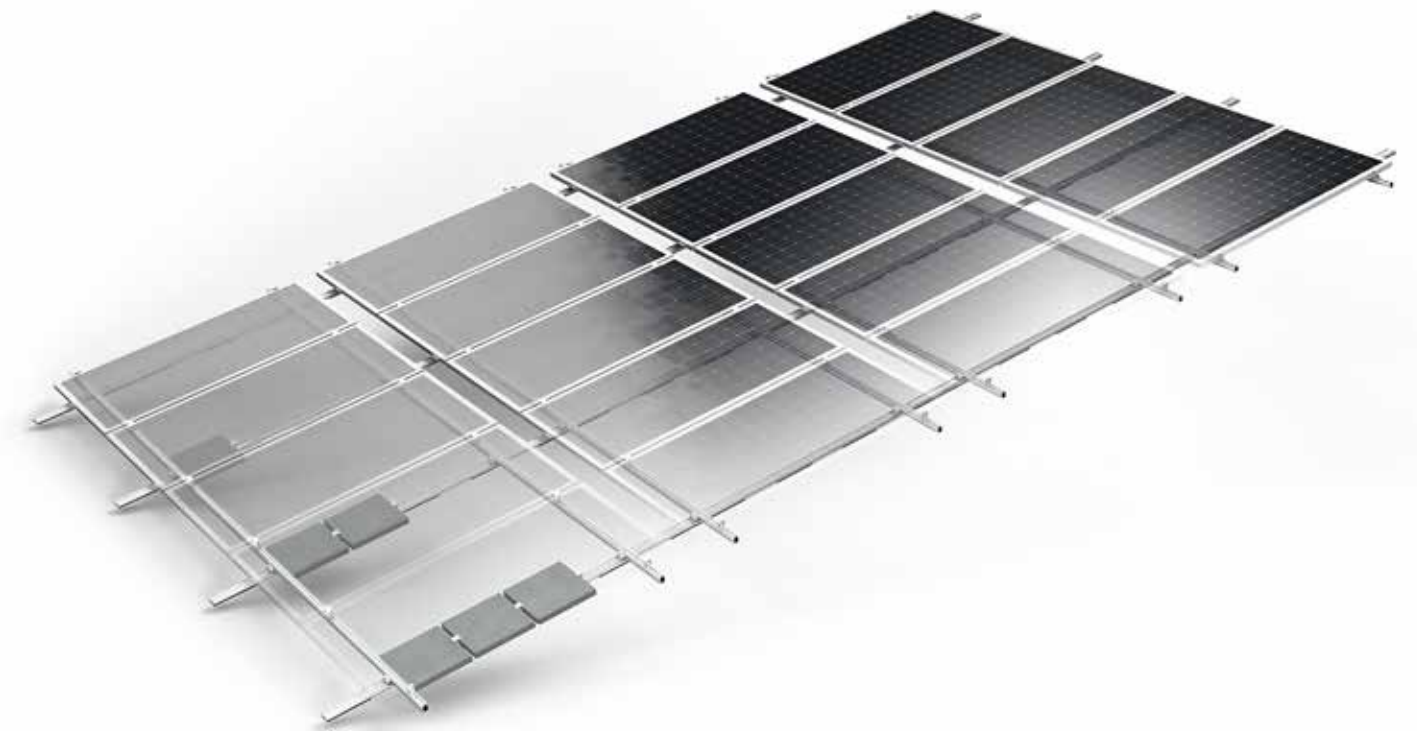
High-tech protective mats of 11 mm with a non-slip coating (PE foam)  
and a high permanent compressive strength

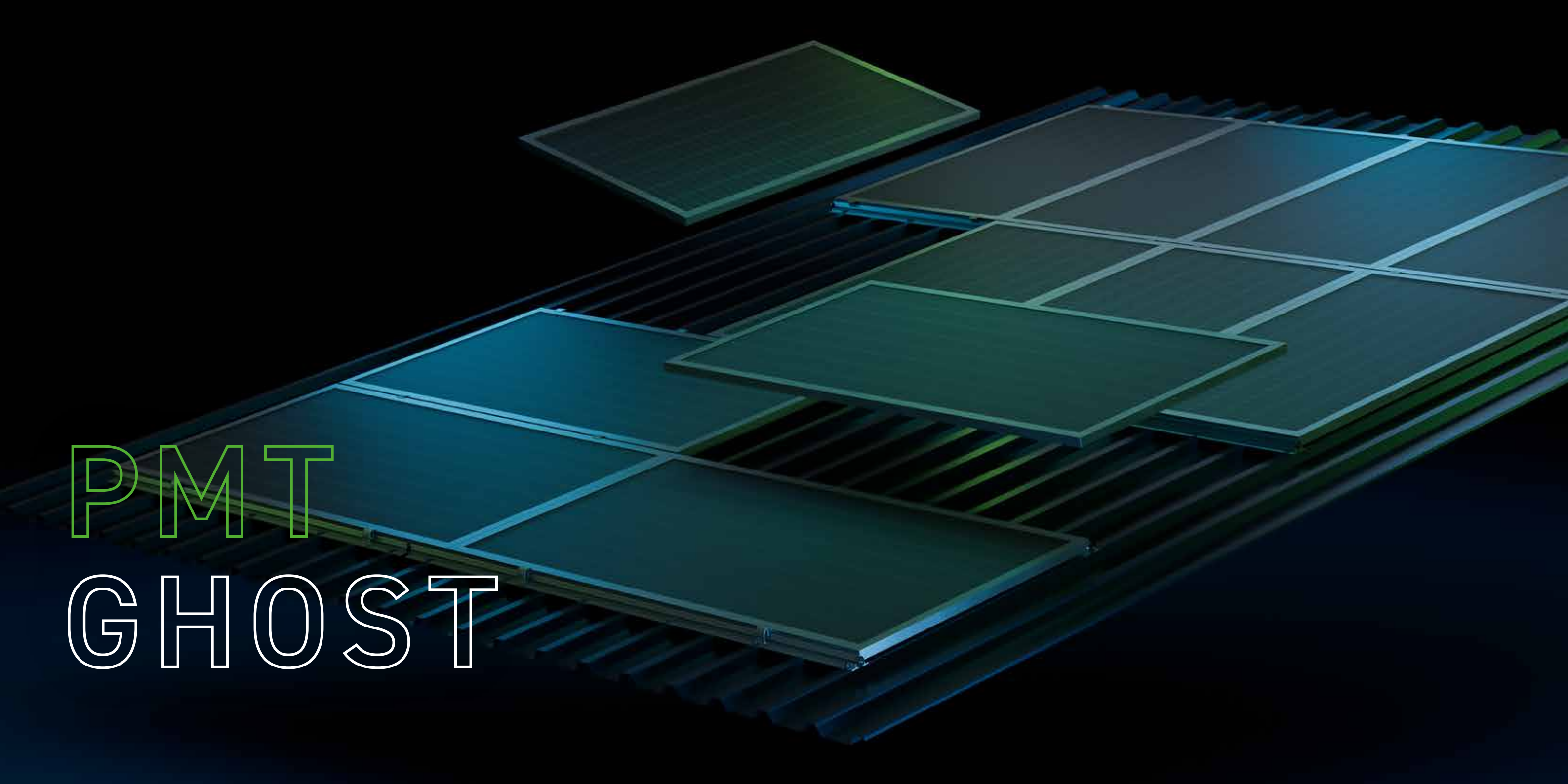


# PMT FLAT DIRECT

## TECHNICAL DATA

<b>Application type</b>	Pitched-, pent-, shedroof (special projects possible)
<b>Roof inclination</b>	0° to 30°
<b>Roof covering</b>	Film (EPDM, PVC, TPO/FPO), bitumen, concrete, sandwich
<b>Roof connection</b>	Possible without roof penetration
<b>Minimum arrangement</b>	2 rows á 3 modules 3 rows á 2 modules
<b>Standard spacing</b>	Module length X + 160mm from module edge to module edge (special projects possible) Details are to be found in the project report
<b>Weight</b>	Low sureface load 1,25kg/m <sup>2</sup> ca. 10,7kg/m <sup>2</sup> substructure + module
<b>Material</b>	High-quality aluminium EN-AW-6063-T3 and stainless steel A2-70
<b>PV module suitability</b>	All standard PV module sizes: Width: 980 – 1050 mm (1220mm*) Length: 1630 – 1870mm (2110mm*) Height: 30 –50mm  *on request





PMT

GHOST



# PMT GHOST

## PRODUCT BENEFITS \*

<b>Revolutionary design</b>	Only three components: rail, detent cover and fastening
<b>Everything is possible</b>	Horizontal and vertical mounting as well as a combination possible, any module size with module frame height 30 – 40 mm can be installed with the same rail
<b>Fast and easy installation</b>	No screws are required to clamp the modules This reduces installation errors to a minimum
<b>Logistics and storage optimised</b>	Cost savings thanks to stackable rails, 140 rails per packaging unit for all available lengths
<b>Cost efficiency</b>	Comparatively favourable installation system in terms of material and installation time
<b>Integrated cable management</b>	Cables can be laid directly on the system
<b>No thermal separation necessary</b>	The floating modules mean that a larger number of module fields can be installed



\* The manufacturer's specifications must be observed and approval must be obtained from the customer and the manufacturer.

# PMT GHOST

## TECHNICAL DATA \*

<b>Application types</b>	Pitched-, pent-, shed- and butterfly roof
<b>Roof inclination</b>	0° to 75°
<b>Roof covering</b>	Trapezoidal steel sheet with a thickness of 0.75 - 1.0 mm
<b>Roof connection</b>	Screw connection with seal
<b>Fastening</b>	Non-cutting drill screw with AbZ
<b>Material</b>	Aluminium EN-AW-6060-T66 Stainless steel A2
<b>Sealing and protective tape</b>	EPDM 25 x 2 mm preassembled
<b>Arrangement</b>	Horizontal and vertical mounting, combination possible
<b>1 system – 3 mounting types</b>	Edge clamping, quarter point clamping, 6-point clamping possible
<b>PV module suitability</b>	All standard PV module sizes Framed modules with frame height 30 – 40 mm



\* The manufacturer's specifications must be observed and approval must be obtained from the customer and the manufacturer.

PMT

CARPORT





# PMT CARPORT

## PRODUCT BENEFITS

---

Authorisation planning, construction and material supply from a single source

---

More than 10 years of market experience and a wide range of realised projects

---

Unique design

---

Versatile range of accessories

---

Integrable wallbox mounting option

---

Maximum parking space capacity thanks to 4 double parking spaces between two sockets

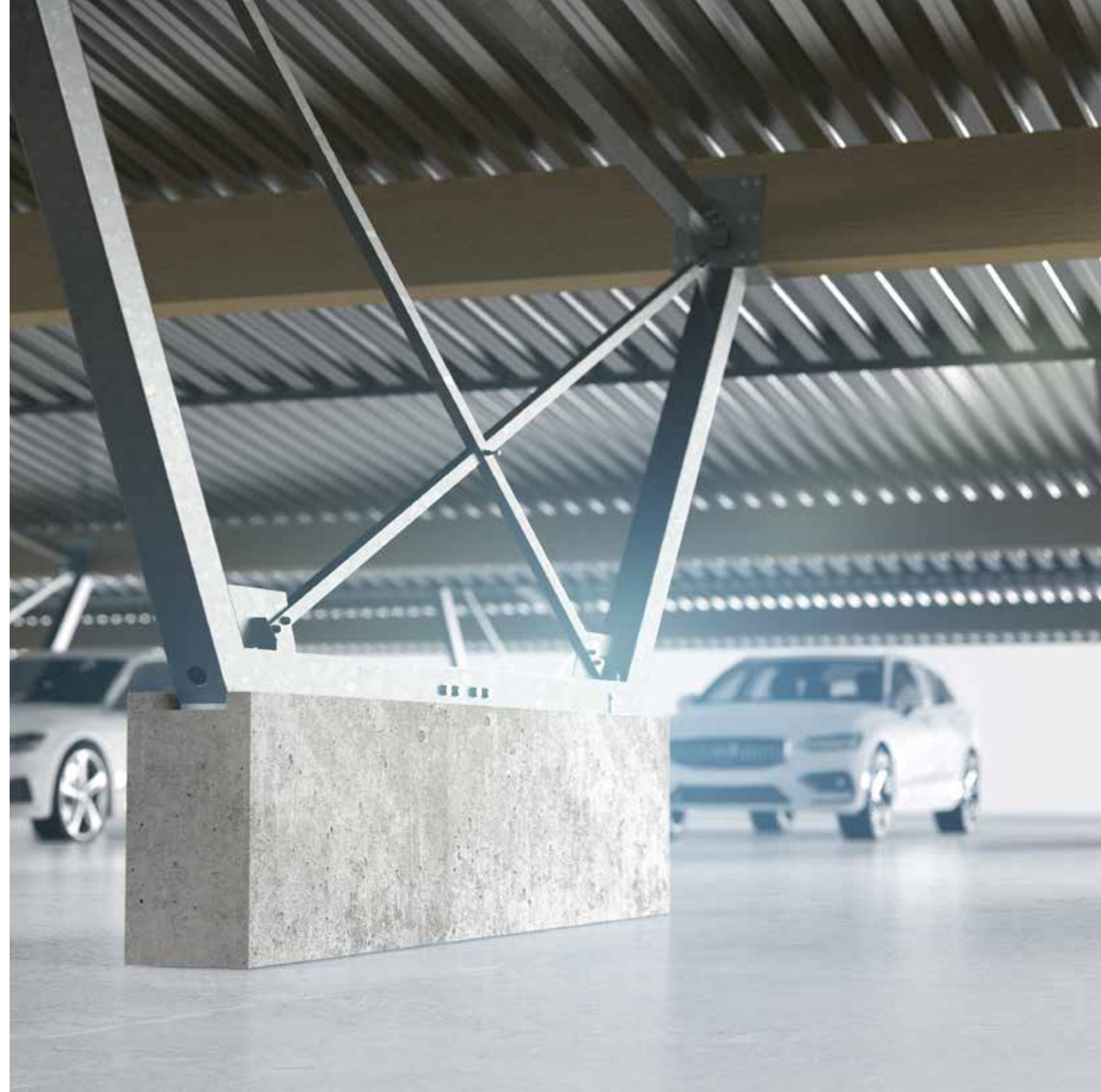
---

Integrated protection against collision due to prefabricated concrete base

---

Minimally invasive foundation by driven piles

---



# PMT CARPORT

## TECHNICAL DATA

Entry height	2.65 m / 3.75 m
Spacing between supports	Project-related
Depth of Roof	13 m (in standard version)
Length of roof	Unlimited
Roof pitch	10°
Impact protection	10 kN (for cars up to 3.0 tonnes)
Purlin	Wood or steel



# P L A N

# L I K E

# A P P R O

Our PV planning software PMT PLAN supports you in the simple and secure planning of your PV project. Cloud-based, you can access it anytime and anywhere.

More information  
<https://pmt.solutions/en/photovoltaik-planer/>





A group of five people, three men and two women, are standing in front of a car in a dark, industrial setting. They are all wearing dark clothing. The man in the center has his arms crossed. The woman on the right is also wearing glasses and has her arms crossed. The background shows a building with horizontal siding and some trees in the distance.

# ACADEMY+ SERVICES

# ACADEMY+SERVICES

<b>Installation instructions</b>	We accompany you on the construction site: support on site for smooth and successful projects
<b>Installation training</b>	Get to know systems properly during a training course: in-depth knowledge through practical exercises for safe handling of the system
<b>Get to know roof connections for all substrates</b>	Comprehensive expertise for flexible and safe installations on different roof types
<b>From beginner to advanced to professional</b>	Complete mastery of the planning steps for efficient and error-free projects
<b>Training for specific applications</b>	Targeted knowledge for specific project project situations and requirements
<b>Customer support via email &amp; telephone</b>	Immediate and personalised help for urgent matters
<b>Multi-level project security</b>	Increased reliability and security for your projects
<b>PMT PROOF LITE</b>	We visit and check the finished system for construction defects and technical faults
<b>PMT PROOF CLASSIC</b>	Visit and inspection of the finished system + wind load certificate from the IFI, Securing against caterpillar effect & insulation test
<b>PMT PROOF PREMIUM</b>	Inspection of the finished system; wind load certificate from the IFI, protection against caterpillar effect, insulation test, training for installation personnel and, if possible, drone flight over the system



WE ARE  
HAPPY TO  
ADVISE YOU

Premium Mounting Technologies GmbH & Co. KG  
Industriestr. 25  
D-95346 Stadtsteinach

T +49 9225 9550 0  
F +49 9225 9550 999  
info@pmt.solutions

[www.pmt.solutions](http://www.pmt.solutions)

Technical changes, delivery possibilities and errors excepted.



# PMT

[www.pmt.solutions](http://www.pmt.solutions)